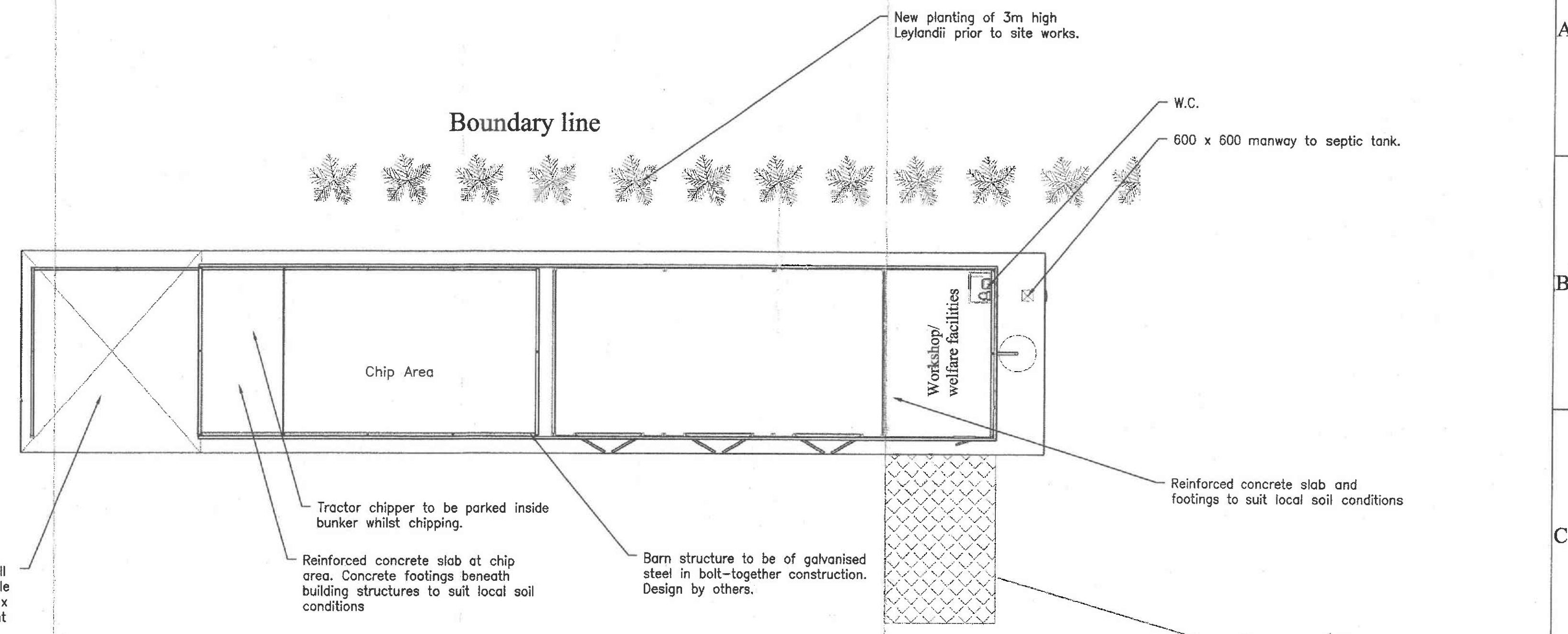
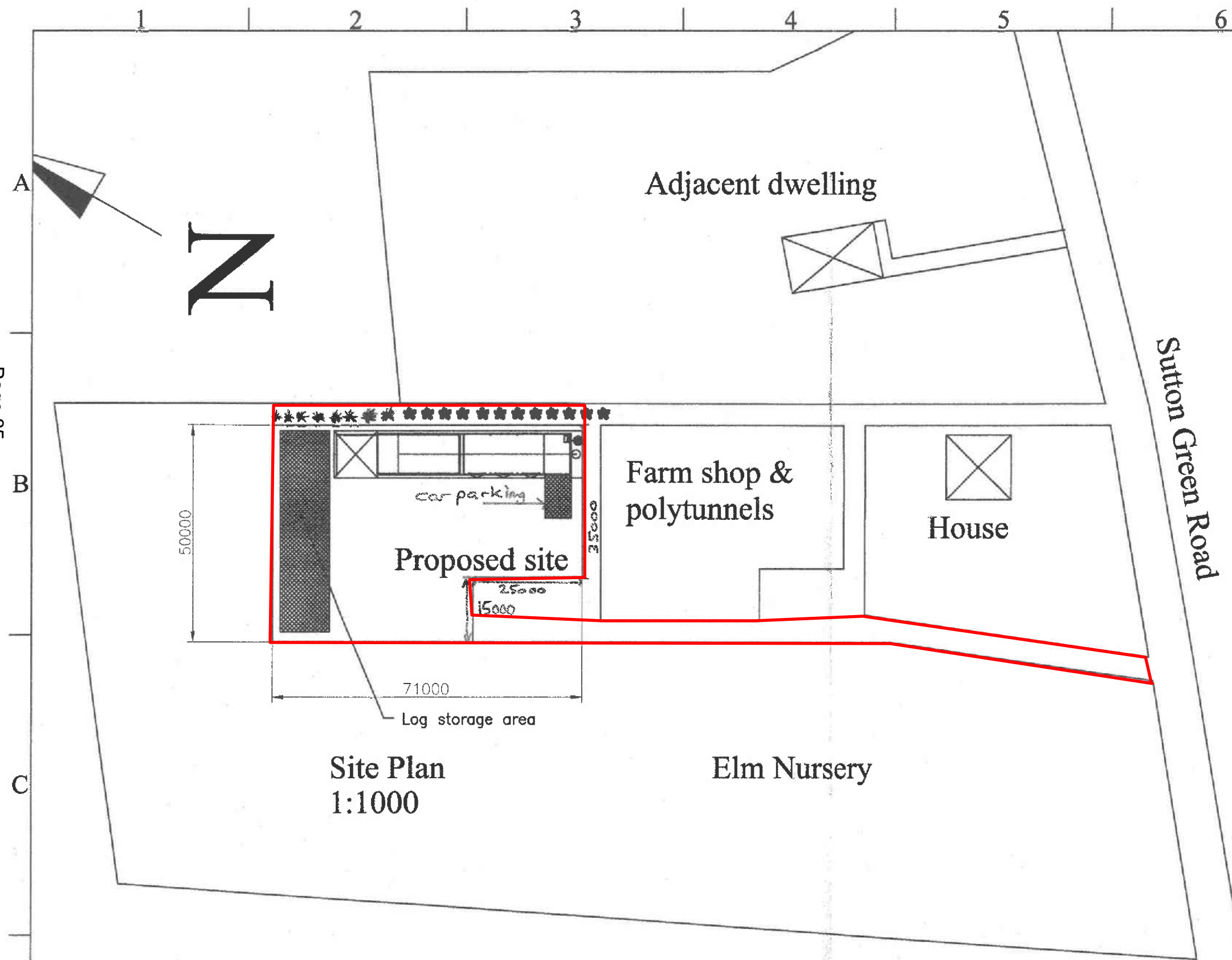


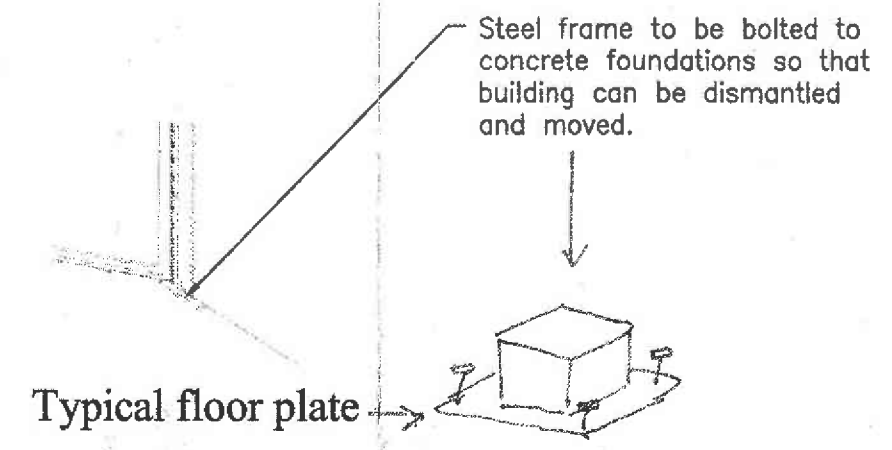
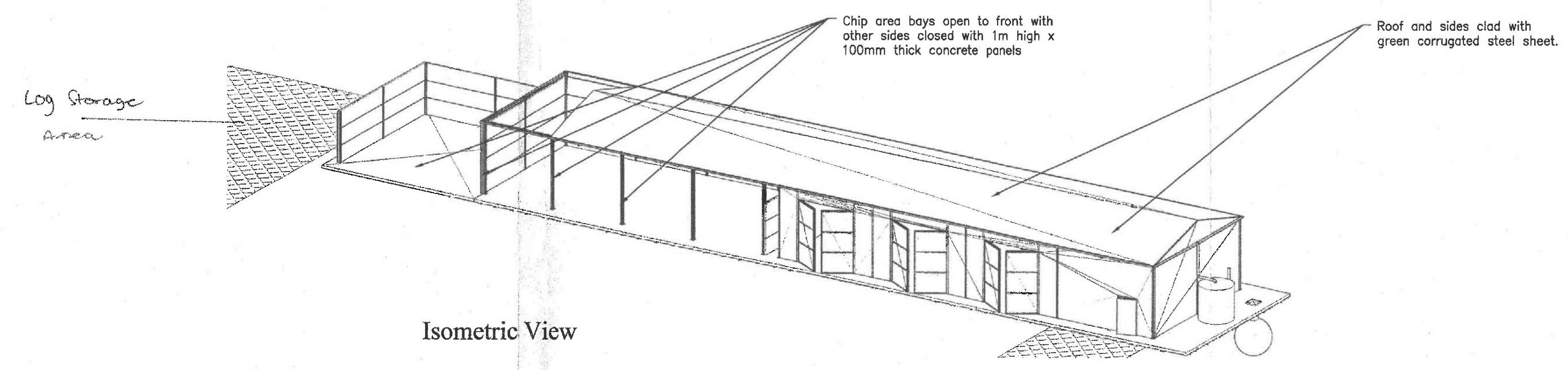
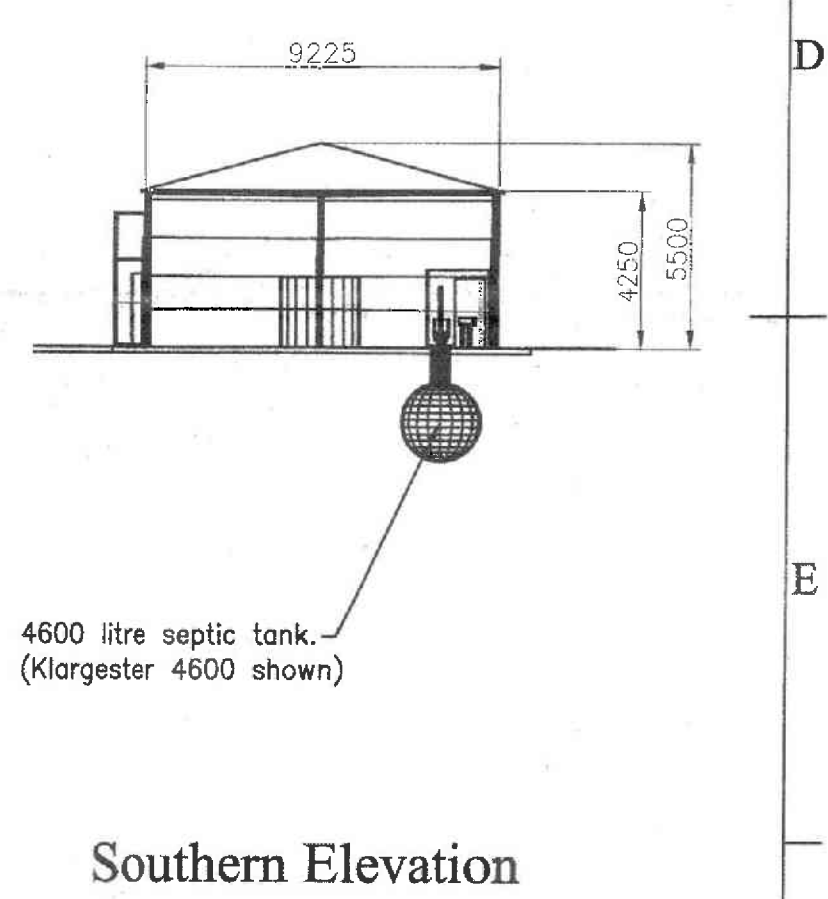
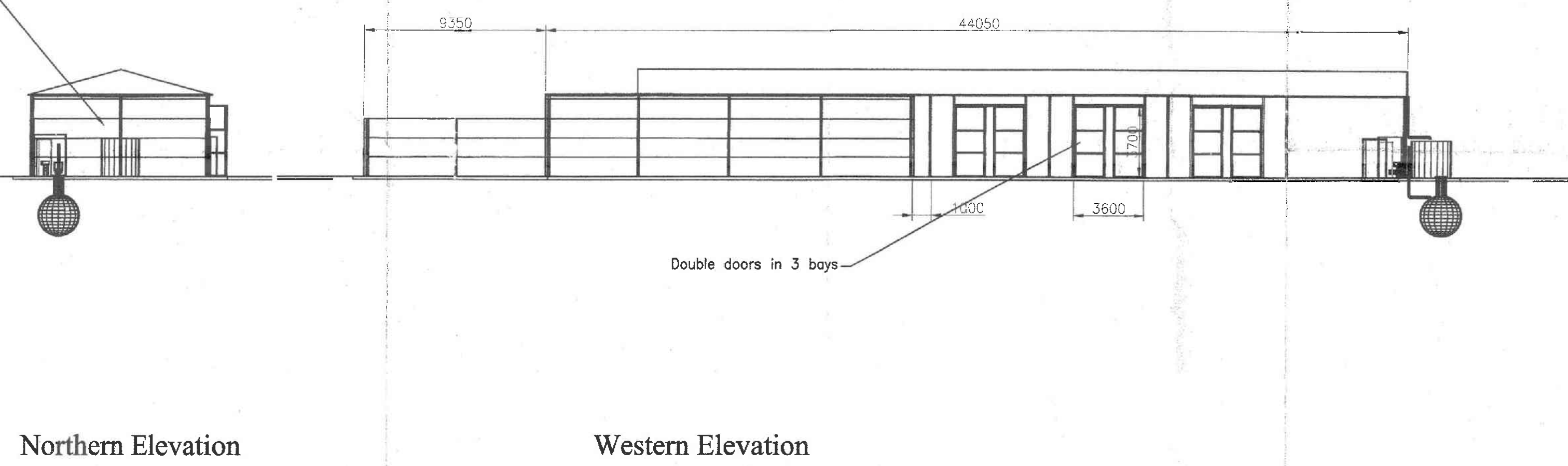
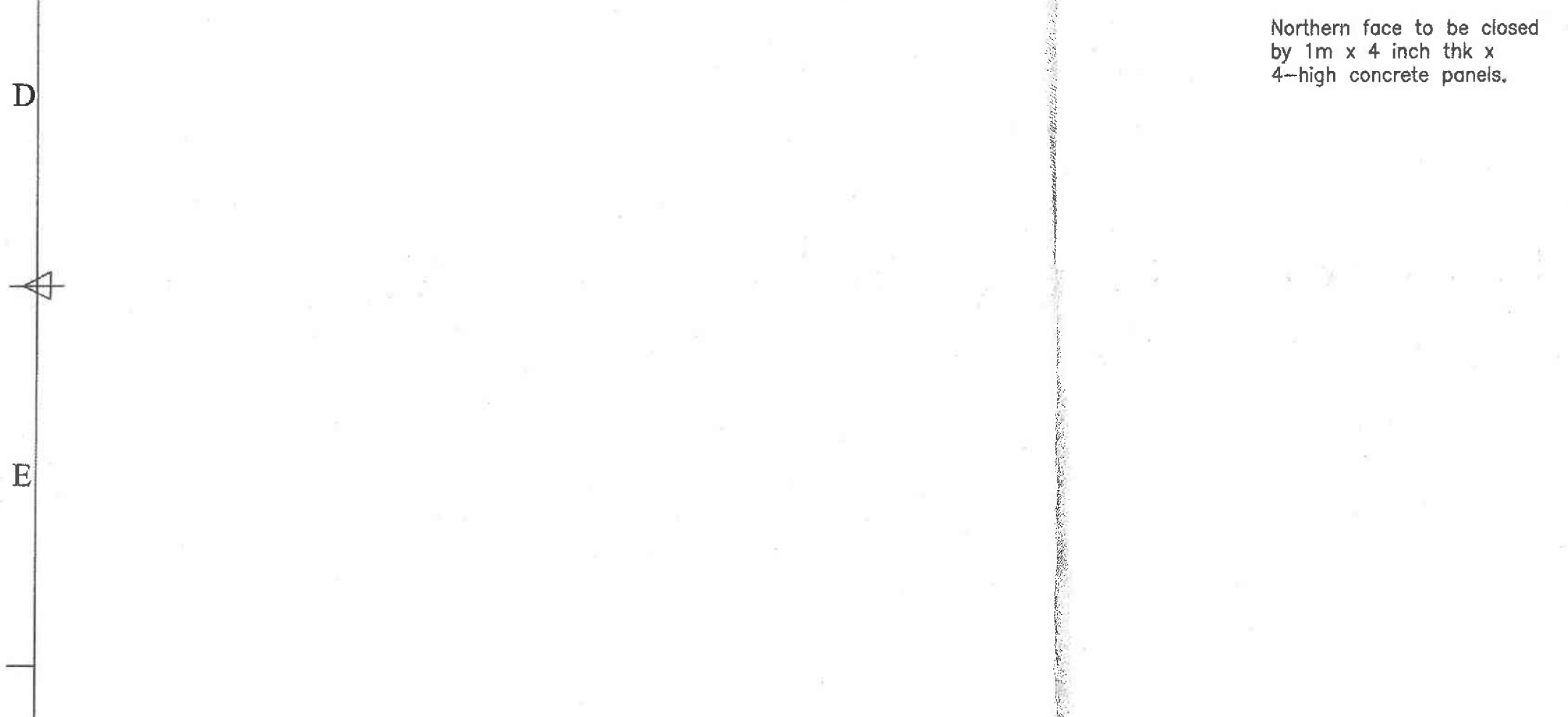
RevNo	Revision note	Date	Signature	Checked
B	Storage moved, chip area extended, notes amended	28/10/15	TH	
C	Chip area moved, roof reduced, notes amended	19/04/16	TH	



Storage 'pit' on concrete base with 2deg fall to centre. Support structure to be of suitable RSJ & RSC positioned to take 4 inch thick x 1m high concrete panels to an overall height of 3m on 2 sides.

Tractor chipper to be parked inside bunker whilst chipping.
Reinforced concrete slab at chip area. Concrete footings beneath building structures to suit local soil conditions

Barn structure to be of galvanised steel in bolt-together construction. Design by others.



West End Design Services			
Client	Drawn by	Date	Scale
Redwood Tree Services Ltd Elm Nursery Site Sutton Green Road, Guildford	TH	01/02/15	1:200
Site Layout for barn and associated structures.			
301501-001	Issue	Sheet	
	C		

This page is intentionally left blank